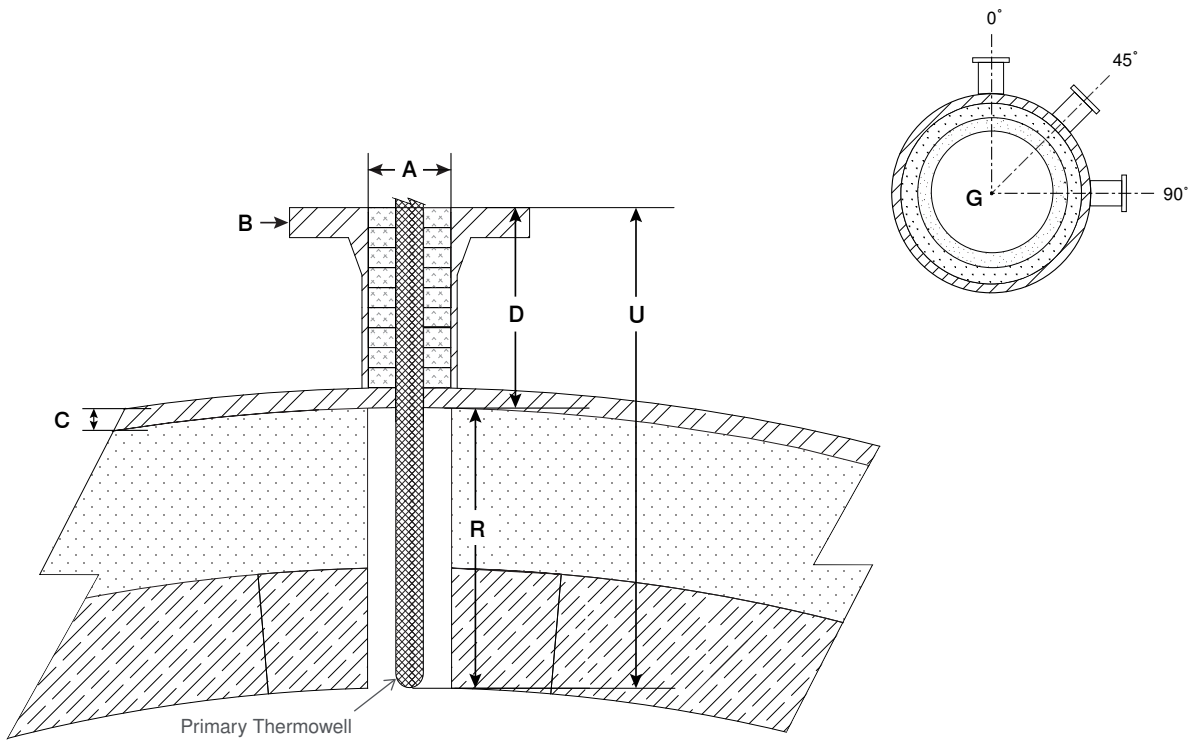


## INSTALLATION DETAILS

### Models HTS & HTV

Name: \_\_\_\_\_  
 Phone: \_\_\_\_\_  
 Email: \_\_\_\_\_

Account: \_\_\_\_\_  
 Tag No.: \_\_\_\_\_  
 Project No.: \_\_\_\_\_



- A) Nozzle Inside Diameter\*: \_\_\_\_\_
- D) Nozzle Inside Height\*: \_\_\_\_\_
- R) Refractory Thickness\*: \_\_\_\_\_
- B) Connection Size & Class\*: \_\_\_\_\_
- C) Reactor Shell Thickness: \_\_\_\_\_
- G) Nozzle Angle from Vertical†: \_\_\_\_\_
- U) Primary Thermowell Length: D+R

- Refractory Lining:
- Insulating Brick
  - Castable

\*Required quote information  
 † Recommended at 0°