

Model 770

FLOAT TYPE LEVEL SWITCH MULTI-POINT EXTERNAL CAGE

MODEL 770A – FOUR ALARM POINTS
MODEL 770B – THREE SWITCH STATIONS
MODEL 770C – TWO SWITCH STATIONS
4" SPACING
MODEL 770D – ONE HEAVY DUTY SWITCH STATION
1.0 TO 5.5" ADJ. DIFF. CONTROL
MODEL 770E – TWO HEAVY DUTY SWITCH STATION
1.0 TO 2.0" ADJ. DIFF. CONTROL ON EACH

The Model **770A** is similar to the Model 760. It is designed with a long float movement and additional power. It will operate 4 individual switch stations with narrow fixed spacing.

The Model **770B** uses the same mechanism and float element as the Model 770A. It operates 3 individual switch stations.

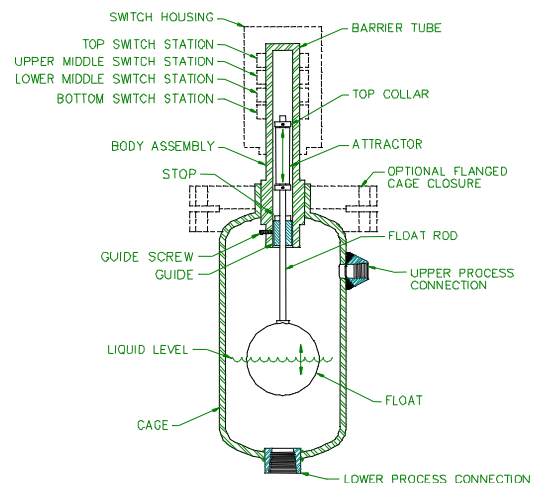
The Model **770C** operates 2 individual switch stations with a 4" separation between switch points.

The Model **770D** operates a single switch station and uses a differential adjustment mechanism. The switching differential is adjustable from approximately 1 to 5 inches of level change.

Model **770E** is similar to the 770D, but has two switch stations with 1"-2" differential.

The float inside the cage floats on the surface of the liquid and rides up and down with it. An attractor is attached to the float and also moves with the liquid level. When the level rises, the attractor is moved up into the field of the lower switch station magnet. If the level continues to rise, the attractor is pushed into the field of the upper switch station magnet and that output switch is actuated.

Similarly, when the level falls, the attractor is sequentially pulled out of the field of each magnet. The return spring pulls the magnet back to its original position and the output switch is deactivated.



Delta Controls
CORPORATION

BASIC TYPE	-	SENSING FLOAT	-	BODY CAGE CONNECTION	-	PROCESS CONN SIZE & TYPE	-	SWITCH & HOUSING	-	OPTIONS
-------------------	---	----------------------	---	-----------------------------	---	-------------------------------------	---	-----------------------------	---	----------------

MODEL EXAMPLE 770D - MS - F - SB/1"SWS - L1C - AA

BASIC TYPE		
M/N	DESCRIPTION	SW STATION
770A	4 STATIONS, 5A ALARM	S1 OR S2
770B	3 STATIONS, ANY KIND	ANY
770C	2 STATIONS, 4" SPACING	ANY
770D	1 STATION, 1.0- 5.0" DIFF.	T, H, L, or D
770E	2 STATION, 1.0"-2.0" DIFF	T, H, L, OR D

BASIC: 316 S.S. TRIM, 416 S.S. ATTRACTOR

SENSING FLOAT								
* ELEMENT ASSEMBLY						ASSEMBLY WORKING		
M/N	MATERIAL		MIN SPG/SUFFIX			PSIG @ °F		
	FLOAT	CAGE	A&B	C	D	100	450	750
HS	316 S.S.	STEEL	0.80	0.72	0.61	470	305	260
HB	316 S.S.	304 S.S.	0.80	0.72	0.61	470	305	260
MS	316 S.S.	STEEL	0.65	0.58	0.45	475	315	270
MB	316 S.S.	304 S.S.	0.65	0.58	0.45	475	315	270
NS	316 S.S.	STEEL	0.50	0.47	0.42	730	475	400
NB	316 S.S.	304 S.S.	0.50	0.47	0.42	730	475	400
PS	316 S.S.	STEEL	0.40	0.38	0.33	375	250	215
PB	316 S.S.	304 S.S.	0.40	0.38	0.33	375	250	215
IS	316 S.S.	STEEL	0.55 TO 1.5 AVG. SPG			730	475	400

* STEEL CAGE IS A-106B MATERIAL;
FOR 316 S.S. INSTEAD OF 304 S.S. MATERIAL CHANGE "B" TO "Y" & M: ADD \$502. H, N, P & I: ADD \$628.

HIGHER TEMPERATURES AND PRESSURES AVAILABLE; C/F OTHER MATERIALS ARE AVAILABLE; C/F

SWITCH & HOUSING
SEE SHEET #2 FOR SWITCH STATION DESCRIPTIONS

BODY CAGE CONNECTION					
M/N	CONN MATERIAL	BY FLOAT TYPE			
		H	M	K	N, I, P
W	STEEL OR 304 S.S.				
F	STEEL				
▲F	150# 304 S.S.				

* "W" = WELDED SOLID, "F" = FLANGED CLEANOUT, ANSI DESIGN

▲ 150# RAISED FACE PRICED; OTHER TYPES & RATINGS AVAILABLE; C/F ADD 20% FOR 316 S.S. NOTE THAT BOTH FLANGE AND CAGE MUST BE THE SAME MATERIAL *

OPTIONS							
OPTION M/N *	HOUSING EXTENSION LENGTH (IN.)	MAX. PROCESS TEMP. (°F) - SWITCHES					
		CONDENSING SERVICE (STREAM, DOWTHERM)			NONCONDENSING (GAS, HYDROCARBONS)		
		D	S, L	H, T	D	S, L	H, T
AA	NONE	400	500	750	500	600	850
T1	6"	500	575	950	600	700	1100
T2	12"	600	650	1250	800	925	1500
SA	316 S.S. SHEATHED ATTRACTOR						
HH	120VAC ELECTRICAL HOUSING HEATER TO PREVENT CONDENSATION & ICING; INSULATE HOUSING FOR LOW AMBIENT CONDITION						

M/N & ANSI SIZE	A105 CARBON STEEL			** 304 SS		
	SB	SS	SSD	SB	SS	SSD
▲ 1"SW*						
▲ 1"FPT*						
1"/150R*						
1"/300R*						
1"/600R*						
2"/150R*						
2"/300R*						
2"/600R*						
ZZ SPECIFY FLANGE						

* PROCESS CONNECTION MATERIAL SAME AS CAGE MATERIAL

TYPE HOOKUP: "SB" = SIDE/BOTTOM; "SS" = SIDE/SIDE SPECIAL CONNECTION SPACING CONNECTION

▲ 3000 PSIG, WOG FITTING RATING; 1" SCH 80 OR 160 WELDING STUB CONNECTIONS AVAILABLE; C/F WITH DETAILS

NOTE: INSTALLED DRAIN VALVE AVAILABLE: C/F WITH SPECIFICATIONS

NOTE: ADD 15% TO 304 S.S. PRICE FOR 316 S.S. MATERIAL (MUST BE SAME AS THE CAGE)

*



Engineered Reliability

585 Fortson Street
Shreveport, La. 71107 - USA
P: +1(318) 424-8471
F: +1(318) 425-2421
sales@deltacnt.com
www.deltacnt.com