

Model 765

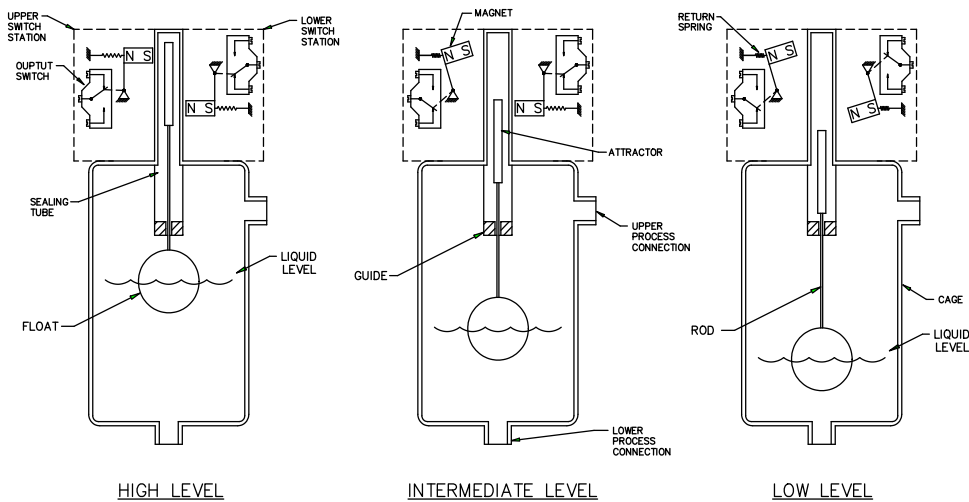
FLOAT TYPE LEVEL SWITCH – EXTERNAL CAGE MODEL 765A - TWO ALARM POINTS MODEL 765D – ONE ALARM POINT WITH DIFFERENTIAL

The Model 765A is very similar to the Model 760. The major difference is that the float moves farther and a second switch station is added. This design allows both monitoring and shutdown operation of critical liquid levels with a single control. It can provide a "High" alarm, plus a "High-High" shutdown action with one control unit.

The Model 765A float inside the cage floats on the surface of the liquid and rides up and down with it. An attractor is attached to the float and also moves with the station magnet. When the level rises, the attractor is moved up into the field of the switch station magnet. The magnet is free to move and is pulled in against the side of the nonmagnetic sealing tube. The output switch is actuated by the movement of the magnet. If the level continues to rise, the attractor is pushed into the field of the upper switch station magnet and that output switch is actuated.

Similarly, when the liquid level falls, the attractor is sequentially pulled out of the field of each magnet. The magnet moves back to its original position and the output switch is deactivated. Note that extra power (greater SPG) is required for operating the second switch station.

The Model 765D body, mechanism, and float are the same as the one used for the Model 765A. The difference is that it only has a single switching station. The station activates when the sensing float rises to the upper stop and lifts the guide rod attractor into the field of the station magnet. The station stays activated until the float moves down against the lower stop. The guide rod-attractor is then pulled down out of the magnetic field and the switch station deactivates. It remains in that condition until the float again rises up against the upper stop and activates the switch.



Delta Controls
CORPORATION

BASIC TYPE	-	SENSING ELEMENT	-	BODY/CAGE CONNECTION	-	SIZE & TYPE PROCESS CONN	-	SWITCH & HOUSING	-	OPTIONS
-------------------	---	------------------------	---	-----------------------------	---	-------------------------------------	---	-----------------------------	---	----------------

MODEL EXAMPLE 765D - GS - W - SB/1"/600RS - L1W - AA

BASIC TYPE	
M/N	DESCRIPTION
765A	2 ALARMS
765D	1 ADJ. DIFF

BASIC: 316 S.S. TRIM,
416 S.S. ATTRACTOR

SENSING ELEMENT							
* ELEMENT ASSEMBLY				ASSEMBLY WORKING			
M/N	MATERIAL		MIN SPG		PSIG @ °F		
	FLOAT	CAGE	A	D	100	450	750
GS	316 S.S.	STEEL	0.85	0.75	850	565	485
GB	316 S.S.	304 S.S.	0.85	0.75	850	565	485
DS	316 S.S.	STEEL	0.85	0.75	525	350	300
DB	316 S.S.	304 S.S.	0.85	0.75	525	350	300
HS	316 S.S.	STEEL	0.70	0.65	1170	780	665
HB	316 S.S.	304 S.S.	0.70	0.65	1170	780	665
LS	316 S.S.	STEEL	0.70	0.65	470	305	260
LB	316 S.S.	304 S.S.	0.70	0.65	470	305	260
SS	316 S.S.	STEEL	0.60	0.55	650	430	370
SB	316 S.S.	304 S.S.	0.60	0.55	650	430	370
MS	316 S.S.	STEEL	0.50	0.46	485	325	275
MB	316 S.S.	304 S.S.	0.50	0.46	485	325	275
NS	316 S.S.	STEEL	0.45	0.41	730	475	400
NB	316 S.S.	304 S.S.	0.45	0.41	730	475	400
PS	316 S.S.	STEEL	0.35	0.32	375	250	215
PB	316 S.S.	304 S.S.	0.35	0.32	375	250	215
INTERFACE SERVICE							
IS	316 S.S.	STEEL	▲	▲	730	475	400
IB	316 S.S.	304 S.S.	▲	▲	730	475	400

STEEL CAGE IS A-106B CARBON STEEL
FOR 316 S.S. CAGE INSTEAD OF 304 S.S.; CHANGE "B" TO "Y"; &
ADD AS FOLLOWS: ADD 30 PERCENT TO B PRICE
OTHER PRESSURE & TEMP RATINGS AVAILABLE; C/F

▲MINIMUM DIFFERENCE BETWEEN THE SPECIFIC GRAVITIES OF
THE UPPER AND LOWER LIQUIDS: 0.10 SPG UNITS.
OTHER MATERIALS AVAILABLE: CONSULT FACTORY
SPECIAL BODY & CAGE MATERIALS, & SIZES FOR EXTREME
TEMPERATURE AND PRESSURE RATINGS ARE AVAILABLE: C/F

BODY/CAGE CONNECTION						
M/N	BODY & CAGE	BY FLOAT TYPE				
*	CONN MATERIAL	D	G,L	H,S,M	K,P	N,I
W	STEEL & 304 S.S.					
F	STEEL C/O					
F	304 S.S. C/O					

"W" = WELDED SOLID

"F" FLANGED CLEANOUT, ANSI DESIGN.

150# OR 300# FLANGES INCLUDED IN PRICE, HIGHER
RATINGS AVAILABLE; C/F

ADD 20% FOR 316 S.S. INSTEAD OF 304 S.S. (SAME AS

SIZE & TYPE PROCESS CONN					
M/N &	A105 CARBON STEEL			** 304 STAINLESS STEEL	
ANSI SIZE	SB	SS	SSD	SB	SSD
▲ 1"SW*					
▲ 1"FPT*					
1"/150R*					
1"/300R*					
1"/600R*					
2"/150R*					
2"/300R*					
2"/600R*					
ZZ SPECIFY FLANGE					

* PROCESS CONNECTION MATERIAL IS SAME AS CAGE MATERIAL

STYLE OF PROCESS CONNECTION: "SB" = SIDE/BOTTOM;

"SS" = SIDE/SIDE; "SSD" PLUS 3/4" SIZE BOTTOM DRAIN;

SPECIFY NPT OR SW.; SPECIAL CONNECTION SPACING AVAILABLE: C/F

▲ 3000 PSIG, WOG FITTING RATING;

1" SCH 80 OR 160 WELDING STUB CONNECTIONS AVAILABLE; C/F WITH
DETAILS

NOTE: INSTALLED DRAIN VALVE AVAILABLE: C/F WITH
SPECIFICATIONS

** FOR 316SS, ADD 30% TO 304 SS PRICE. *

SWITCH & HOUSING					
▲ SWITCH STATION DESCRIPTIONS -					INTENDED SERVICE **
W/P-N4	765A	765D	E/P-7CD,9	765A	765D
S1W		NA	* S1C		NA
S2W		NA	* S2C		NA
S4W			S4C		GENERAL USAGE
T1W			T1C		
T2W			T2C		HIGH TEMPERATURE
H1W			H1C		
H2W			H2C		ENVIRONMENTALLY SEALED
L1W			L1C		
L2W			L2C		A.C. MOTOR LOADS
D1W			D1C		
D2W			D2C		HIGH D.C. LOADS

▲ FOR NEMA 4X (EPOXY): ADD \$ AND CHANGE "W" TO "X"

FOR NEMA 7, GROUP B: ADD \$ AND CHANGE "C" TO "B"

* FOR ALL 300 S.S. NEMA 7B HOUSING: ADD \$ AND CHANGE "C" TO "T"

**SEE DATA SHEET FOR SWITCH LOAD AND SERVICE RATINGS

OPTIONS							
OPTIONS M/N *	HOUSING EXTENSION LENGTH (INCHES)	MAX PROCESS TEMP (°F) - SWITCHES					
		CONDENSING SERVICE (STEAM, DOWTHERM)			NONCONDENSING (GAS, HYDROCARBONS)		
		D	S,L	H,T	D	S,L	H,T
AA	NONE	400	500	750	500	600	850
T1	6"	500	575	950	600	700	1100
T2	12"	600	650	1250	800	925	1500
SA	316 S.S. SHEATHED ATTRACTOR						
HH	120VAC ELECTRICAL HOUSING HEATER TO PREVENT CONDENSATION & ICING; INSULATE HOUSING FOR LOW AMBIENT CONDITION						



**Engineered
Reliability**

585 Fortson Street
Shreveport, La. 71107 - USA
P: +1(318) 424-8471
F: +1(318) 425-2421
sales@deltacnt.com
www.deltacnt.com