

# TYPE 625 ULTRA LOW FLOW SWITCH

## DEACTUATION ADJUSTABLE 0.03 TO 0.8 GPM (0.23 TO 3.0 LPM) LIQUID

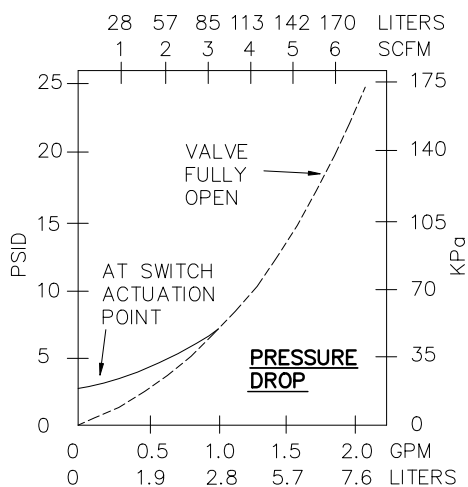
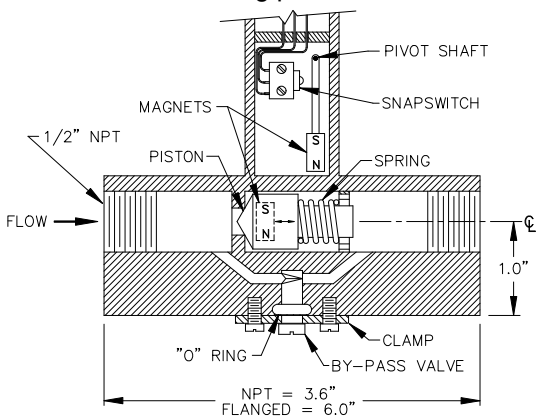
## 0.15 TO 2.0 SCFM (4.2 TO 18.4 CDM)

### APPLICATION

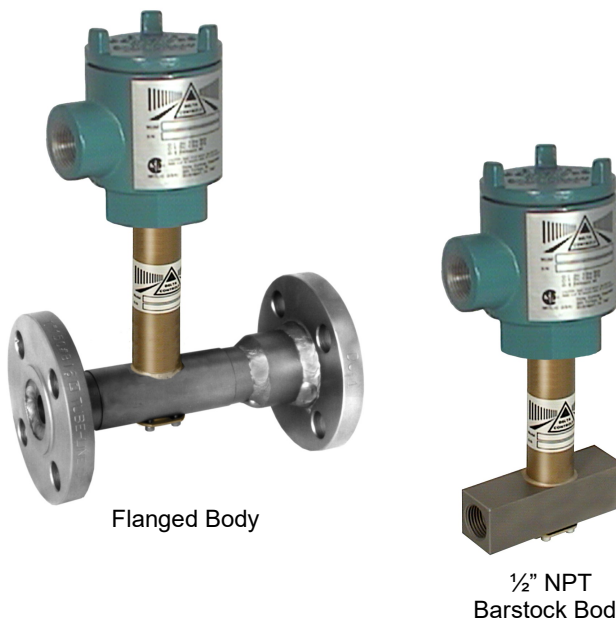
The Type 625 produces on/off switching action at a preset rate of flow. It is used for flow protection, safety monitoring, purging for explosion proofing, etc.

### OPERATING PRINCIPLE

The flowing fluid may pass through both the variable piston annulus and/or the bypass valve. A pressure drop is created across the piston due to the flow rate of the fluid. Increasing differential pressure causes the piston to move and compress the range spring. When the piston magnet is carried far enough, the switch magnet is attracted and the output snap switch is actuated. The amount of bypass valve opening determines the flow rate switching point.



Pressure Drop at Various Flow Rates



Flanged Body

1/2" NPT Barstock Body

### MODEL NUMBERING SYSTEM

**Actuation Point:** Within 5% of the set flow rate  
**Housing:** Class 1, Division 1, Groups BCD, X-Proof, also 4X, IP67, Third Party Listed by CSA NRTL/C (USA & Canada)  
**Body/Tube Connection:** NPT; flanged optional

BASIC TYPE	WETTED MATERIAL	OUTPUT SWITCH	SIZE & TYPE END CONN.	OPTIONS
EXAMPLE MODEL 625	YYD	A	1/2" FPT	AA

BASIC TYPE	
M/N	625

M/N	WETTED MATERIAL			PIPELINE SIZE AND		END * CONN TYPE
	BODY	TRIM	SEAL	1/2"	1"	
LBZ	BRASS	BRASS	NITRILE	N/A	N/A	FPT
YYD	316SS	316SS	TEFLON	N/A	N/A	150R 300R

\* MAXIMUM WORKING PRESSURE IS 1100 PSIG

OUTPUT SWITCH				
M/N	CONTACTS	AMPS*	MAX °F	USAGE
A	SPDT	10	220	GEN'L PURPOSE
B	SPDT	5	300	HIGH TEMP
C	DPDT	10	220	GEN'L PURPOSE

\* AT 240 VOLTS AC

OPTIONS	
M/N	DESCRIPTION
AA	NONE
SH	STAINLESS STEEL HOUSING
TS	CLAMP TYPE TERMINAL STRIP
ZZ	OTHER MATERIALS, FLANGE, ETC.

NOTES: (1) OTHER SIZES AND TYPE END CONNECTIONS ARE AVAILABLE. CONSULT FACTORY WITH YOUR REQUIREMENTS.

(2) BODY / SWITCH UNIT: SEAL WELDED IS BASIC.

APPLICATION NUMBER NOT REQUIRED. CONSULT FACTORY FOR APPLICATIONS OTHER THAN GASES AND LOW VISCOSITY CLEAN LIQUIDS.

OTHER TYPE END CONNECTIONS ARE AVAILABLE. CONSULT FACTORY WITH YOUR REQUIREMENTS.



# Delta Controls

CORPORATION