

MODEL 552 WITH MODULAR ELECTRONICS

FEATURES

- General Purpose Pressure/Level Service
- Separate Electronics Module And Sensor
- Heavy Duty Rugged Body
- Measures Liquid Level In Pressurized Tanks
- Electronics Module Can Be Remoted
- Ranges From 12 Inches Water To 3000 PSI
- Zero & Span Pots For Field Recalibration
- Spark & Voltage Surge Protection
- Optional Selectable Dampening
- Optional LCD Display (in Engineering Units)
- Optional Integral Power Supply Module
- Optional Integral Alarm Module(s)
- Maintenance Free Operation

SPECIFICATIONS

Technology: Silicon Strain gage.

Supply Power:

13 to 35 VDC 2 Wire Loop Powered.

Output: 4-20 mA DC, Isolated, Intrinsically Safe

Loop Impedance:

550 Ω at 24 VDC. 1100 Ω at 35 VDC

Adjustments:

Span from 30% to 100% of sensor range.
Zero to 30% basic and to 80% optionally,
non-interactive.

Over Pressure:

2X Range (35 PSI min) without damage
3X Range (1000 PSI min) without rupture

Temperature Range:

-20 to +220°F (Process, short time)
-20 to +180°F (Electronics)
30 to +130°F (Compensated)

Accuracy: $\pm 0.25\%$ F.S. or better

Thermal Error: $\pm 0.02\%$ F.S./°F Maximum

Barometric Effect: None

OPTIONAL FEATURES

Dampening: Selectable 0.1 to 22 seconds

Indicator:

Large LCD display (in Engineering Units)
DC Power Supply*: Integral VAC to 24 VDC.

Alarm Module(s)*: Integral 5 amp SPDT.

TPC Corrector:

Level Measurement In Pressurized Tanks

* Not third party listed



DESCRIPTION

The Model 552 Pressure Transmitter consists of a potted electronic module and a modular pressure sensor assembly packaged as an integral unit. The sensor includes an oil filled 316-L S.S. or platinum diaphragm which isolates the strain gage bridge from the process liquid or gas. The back of the sensor is usually vented to atmosphere to compensate for barometric pressure changes. The electronics module is potted in a dual system of silicon rubber and epoxy to protect against moisture, corrosion, and vibration.

The 552 is commonly used as a liquid level transmitter in tanks. The pressure at the bottom of a vented tank containing a liquid is linearly proportional to the height and density of the liquid. The TPC corrector option is required for pressurized tanks.



Delta Controls
CORPORATION

MODEL NUMBERING SYSTEM

PRESSURE/LEVEL TRANSMITTER WITH MODULAR ELECTRONICS

BASIC TYPE	RANGE & SENSOR	HOUSING & RATING	PROCESS CONNECTION	OPTIONS	
MODEL NO.:	552Y	G1Y	4XI	17150RY	328

BASIC TYPE	
M/N	BODY MATERIAL
552Y	316 S.S.
552G	HASTELLOY "C"

RANGE & SENSOR		
FULL SCALE RANGES		
M/N *	U.S.A.	METRIC
G1Y	40" H ₂ O G	0.1 BAR-G
G2Y	80" H ₂ O G	0.2 BAR-G
G3Y	200" H ₂ O G	0.5 BAR-G
G4Y	15.0 PSIG	1.0 BAR-G
G5Y	30.0 PSIG	2.0 BAR-G
G6Y	60.0 PSIG	4.0 BAR-G
G7Y	120.0 PSIG	8.0 BAR-G
G8Y	250.0 PSIG	16.0 BAR-G
G9Y	500.0 PSIG	40.0 BAR-G
G10Y	1000 PSIG	80.0 BAR-G
A4Y	15 PSIA	1.0 BAR-A
A5Y	30 PSIA	2.0 BAR-A
A6Y	60 PSIA	4.0 BAR-A
A7Y	120 PSIA	8.0 BAR-A
V6Y	0/-15 PSIV	0/-1 BAR-V
V8Y	-15/+15 PSIV	-1/+1 BAR-V
V10Y	-15/+30 PSIV	-1/+2 BAR-V
V11Y	-15/+60 PSIV	-1/+4 BAR-V
V12Y	-15/+120 PSIV	-1/+8 BAR-V

G RANGES ABOVE 500 PSI NOT THIRD PARTY LISTED

RANGE REFERENCE TO:
"G" = ATMOSPHERIC PRESSURE
"A" = HARD VACUUM
"V" = BELOW ATMOSPHERE
**"Y" = 316-L S.S. FACE (BASIC);
HASTELLOY IS OPTIONAL TO 500 PSI:-

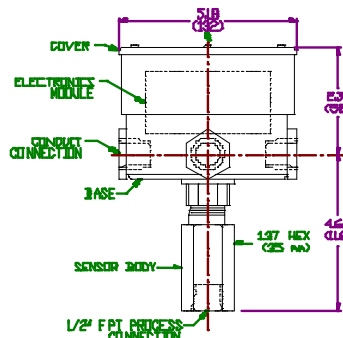
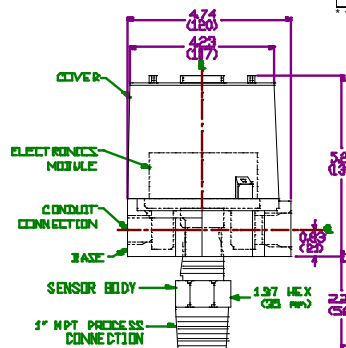
HOUSING & RATING	
M/N	DESCRIPTION (ALL 4X)
	ENVIRONMENT PROOF; 4X; PVC; S.S. TRIM; INTRINSICALLY SAFE, CLASSES 1 & 2, DIVISIONS 1 & 2, GROUPS ABCD, EFG
4XI	EXPLOSION PROOF; CLASSES 1 & 2; DIVISIONS 1 & 2; GROUPS BCD, EFG; ALUMINUM CONSTRUCTION
7WI	EX-PROOF, SAME AS ABOVE EXCEPT ALL 300 S.S. CONSTRUCTION
7TI	300 S.S. CONSTRUCTION

* Conduit supported - Add \$1.20 per foot for interconnecting cable

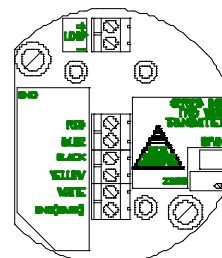
PROCESS CONNECTION		
M/N (ANSI)	MAT	CONNECTION DESCRIPTION
1/2" FPT	316 S.S.	1/2" FEMALE NPT
1" MPT	316 S.S.	1" MALE NPT, OPEN FACE
1" MPTG	HAST "C"	1" MALE NPT, OPEN FACE
17150RY	316 S.S.	17150# R.F. ANSI FLANGE
17300RY	316 S.S.	17300# R.F. ANSI FLANGE
*27150RY	316 S.S.	27150# R.F. ANSI FLANGE
*27150RS	STEEL	27150# R.F. ANSI FLANGE
*27300RS	STEEL	27300# R.F. ANSI FLANGE
*27600RS	STEEL	27600# R.F. ANSI FLANGE
ZZ	ANY	LARGER SIZES; OTHER FACES; OTHER STANDARDS - DIN, JIS, ETC.

OPTIONS	
M/N	DESCRIPTION
AA	NONE
328	DIRECT READING LCD DISPLAY, 3 1/2 DIGITS
	4XI
	7WI
	7TI
TPC	TANK PRESSURE CORRECTOR, SELECT FROM TPC PRICE LIST AND ADD TO PRICE OF THIS TRANSMITTER
SU	SUPPRESS ZERO UP TO 80%
PS1	120 VAC to 24 VDC PS
	HOUSING MOUNTING BRACKET FOR 2" PIPE STAND OR SURFACE MOUNTING (REMOTE)
PSM	
RC	20-4 mADC SIGNAL
	mADC SIGNAL DAMPERING; SELECT 0.1 TO 22 SECONDS
TC	
RH	REMOTE HOUSING *

* 1-1/4" AND 1-1/2" SIZES AVAILABLE



MADE IN THE USA
BY
DELTA CONTROLS



**Engineered
Reliability**

585 Fortson Street
Shreveport, La. 71107 - USA
P: +1(318) 424-8471
F: +1(318) 425-2421
sales@deltacnt.com
www.deltacnt.com