

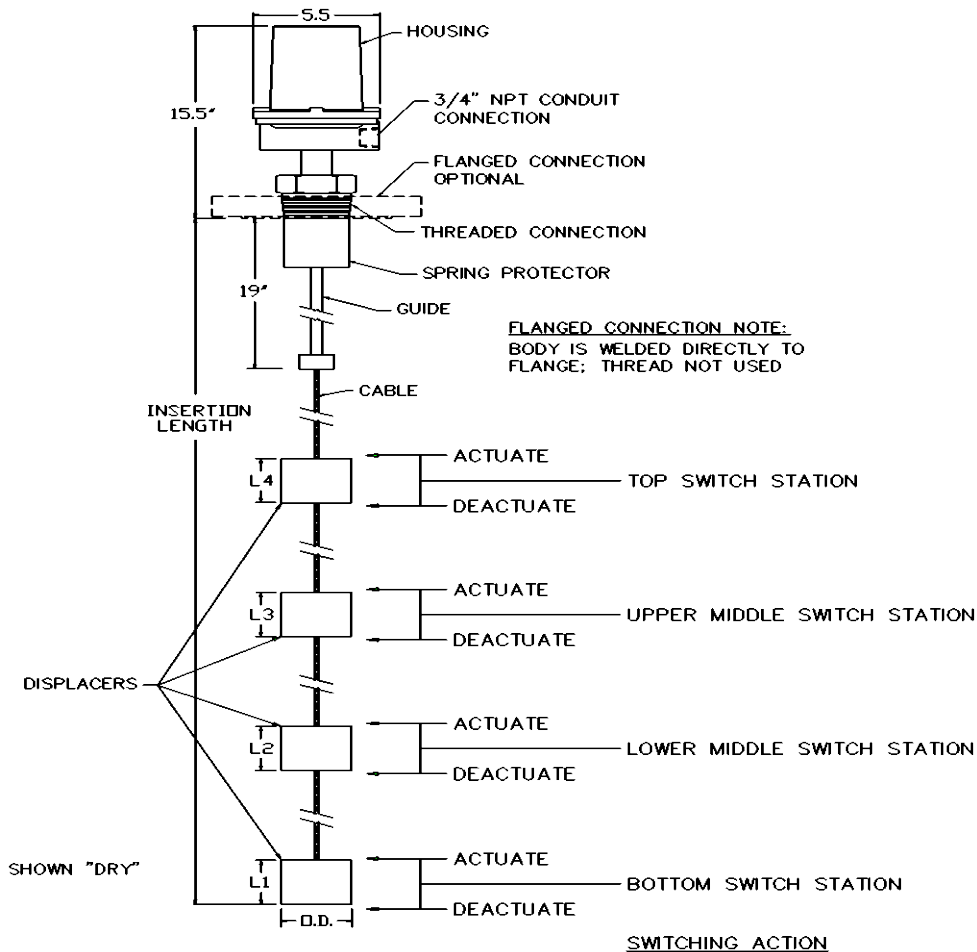
Model 718A

DISPLACER SWITCH - TOP INSERTED 4 ALARM POINTS

The Model 718A uses the same mechanism and body as the Model 717A. The difference is that it is equipped with an additional displacer and switch station. A precise on/off action occurs in the appropriate switch station when the liquid level surface passes the elevation of the related displacer element.

The Model 718A is commonly used to provide a "High" warning alarm, a "High-High" shutdown action, a "Low" warning alarm, and a "Low-Low" shutdown action. The type service is found in processes where a heater must not be uncovered and the tank must not overflow. Another application is emptying a sump using three pumps. Each of the three top displacers starts a pump, the bottom displacer simultaneously stops all three pumps.

The Model 718A is limited to use of the general purpose "S" switch stations. The all stainless steel housing is optional for pharmaceutical / sanitary applications or severe ambient corrosion.



DELTA CONTROLS
CORPORATION

BASIC TYPE	SENSING DISPLACER	INSERTION DISTANCE	PROCESS CONNECTION	SWITCH AND HOUSING	OPTIONS
-------------------	--------------------------	---------------------------	---------------------------	---------------------------	----------------

MODEL
 EXAMPLE: 718A - 23Y - 30' - 3"150RS - S1W - AA

BASIC TYPE

M/N	DESCRIPTION
718A	4 STATION 4 DISPLACER

316 S.S. SPRING: 250°F MAXIMUM;
 INCONEL SPRING TO 450°F
 BASIC: 316 S.S. TRIM,
 416 S.S. ATTRACTOR

INSERTION DISTANCE

M/N	DESCRIPTION
10	10 FT OF 316 S.S. CABLE
#	UP TO 50 FEET OF 316 S.S. CABLE, MAXIMUM

REPLACE "#" WITH REQ'D FEET OF CABLE.
 FOR MONEL OR HASTELLOY "C" CABLE: C/F

PROCESS CONNECTION

M/N	PROCESS CONNECTIONS
3" NPT*	3" NPT
3" 150R*	3" 150# ANSI FLANGE
3" 300R*	3" 300# ANSI FLANGE
3" 600R*	3" 600# ANSI FLANGE
4" 150R*	4" 150# ANSI FLANGE
4" 300R*	4" 300# ANSI FLANGE

REPLACE "*" WITH "S" FOR STEEL,
 "B" FOR 304 S.S., OR
 "Y" FOR 316 S.S.
 CONSULT FACTORY FOR OTHER SIZES &
 RATINGS.

SENSING DISPLACER

DISPLACERS (INCHES)					WKG PSIG @ °F			MINIMUM ANSI FLANGED		
M/N	MAT *	MIN SPG	MAX SPG	O.D.	LENGTHS	100°F	250°F	400°F	NPT	NOZZLE
84Y	316 S.S.	0.45	0.51	3.5	10,12.5,12.5,12.5	385	300	250	N/A	4" SCH 80
85Y	316 S.S.	0.48	0.54	3.5	10,12.5,12.5,12.5	385	300	250	N/A	4" SCH 80
86Y	316 S.S.	0.50	0.57	3.5	8.1,10,10,12.5	385	300	250	N/A	4" SCH 80
87Y	316 S.S.	0.55	0.64	3.5	8.1,10,10,12.5	385	300	250	N/A	4" SCH 80
88Y	316 S.S.	0.60	0.70	3.5	5.9,8.1,8.1,10	385	300	250	N/A	4" SCH 80
89Y	316 S.S.	0.65	0.76	3.5	5.9,8.1,8.1,10	385	300	250	N/A	4" SCH 80
20Y	316 S.S.	0.70	0.82	3.5	5.9,8.1,8.1,10	385	300	250	N/A	4" SCH 80
21Y	316 S.S.	0.75	0.85	2.9	7.1,10,10,12	500	400	325	3"	3" SCH 80
22Y	316 S.S.	0.80	0.94	2.9	7.1,10,10,12	500	400	325	3"	3" SCH 80
23Y	316 S.S.	0.90	1.06	2.9	7.1,10,10,12	500	400	325	3"	3" SCH 80
25Y	316 S.S.	1.01	1.20	2.9	5.9,8.2,8.1,10	500	400	325	3"	3" SCH 80
26Y	316 S.S.	1.10	1.30	2.9	5.9,8.2,8.2,10	500	400	325	3"	3" SCH 80
27Y	316 S.S.	1.20	1.40	2.9	4.8,7.1,7.1,8.2	500	400	325	3"	3" SCH 80
28Y	316 S.S.	1.30	1.50	2.9	4.8,7.1,7.1,8.2	500	400	325	3"	3" SCH 80
29Y	316 S.S.	1.40	1.65	2.9	4.8,7.1,7.1,8.2	500	400	325	3"	3" SCH 80

* 316 S.S. ALSO AVAILABLE IN SOLID POLYPROPYLENE; WORKING PRESSURE OF 2200 PSIG @ 100°F; LIMITED TO 1520 PSIG @ 220°F MAXIMUM. CHANGE "Y" TO "P"

SWITCH AND HOUSING

M/N FIRST CHARACTER	SWITCH TYPE - SERVICE AND LOAD RATINGS
S	GENERAL USE, COMPACT, 4 AMP @ 28VDC, 5 AMP @ 125VAC, 250VAC -65 to 250°F (-54 to 121°C)
M/N SECOND CHARACTER	NUMBER OF CONTACTS
1	1 SPDT CONTACT
2	2 SPDT CONTACTS
M/N THIRD CHARACTER	HOUSING RATING
W	Type 4X, IP65
X	TYPE 4X, IP65 (EPOXY COATED)
C	ALUMINUM - FOR HAZARDOUS LOCATIONS; SEE CSA RATINGS
T	300 STAINLESS STEEL - FOR HAZARDOUS LOCATIONS; SEE CSA RATINGS

OPTIONS

M/N	DESCRIPTION
AA	NONE
IN	INCONEL SPRING 450°F INCREASE MIN. SPG BY 6%
SA	316 S.S. SHEATHED ATTRACTOR
HH	120VAC ELECTRICAL HOUSING HEATER TO PREVENT CONDENSATION & ICING

CSA Ratings:

Housing types 'C' and 'T'
 Cl I Div 1, Gr B,C,D; Cl II, Div 1 Gr E,F,G; Cl III Div 1
 Class I Zone 1, Ex/AEx d IIB+H₂
 Maximum contact ratings 250Vac, 5A, T5 with max
 ambient 80°C. T6 without heater with max ambient 60°C



DELTA CONTROLS
CORPORATION

Engineered Sensors - For Difficult Services

585 Fortson Street
 Shreveport, La. 71107 - USA
 Ph: +1(318) 424-8471
 Fax: +1(318) 425-2421
 E-mail: sales@deltacnt.com
 Web: www.claustemp.com