

MODEL 566 LARGE DIAPHRAGM, SUBMERGED SENSOR, REMOTED ELECTRONICS LEVEL TRANSMITTER FOR SEWAGE AND SLURRY

TS566

FEATURES

- Buildup Isolator for Wastewater and Slurries
- Large, Rugged BUNA-N® Rubber Diaphragm
- Supported By Rigid Pipe or Flexible Cable
- 4-20 mADC, 2 Wire, Intrinsically Safe
- 316 Stainless Steel or PVC Body
- PVC or TEF Cable Jacket
- Zero & Span Pots for Field Recalibration
- Calibrate, Test from Electronic Module
- Spark High Voltage Surge Protection
- Top Side Electronics Housing
- Intrinsically Safe

TYPICAL APPLICATIONS

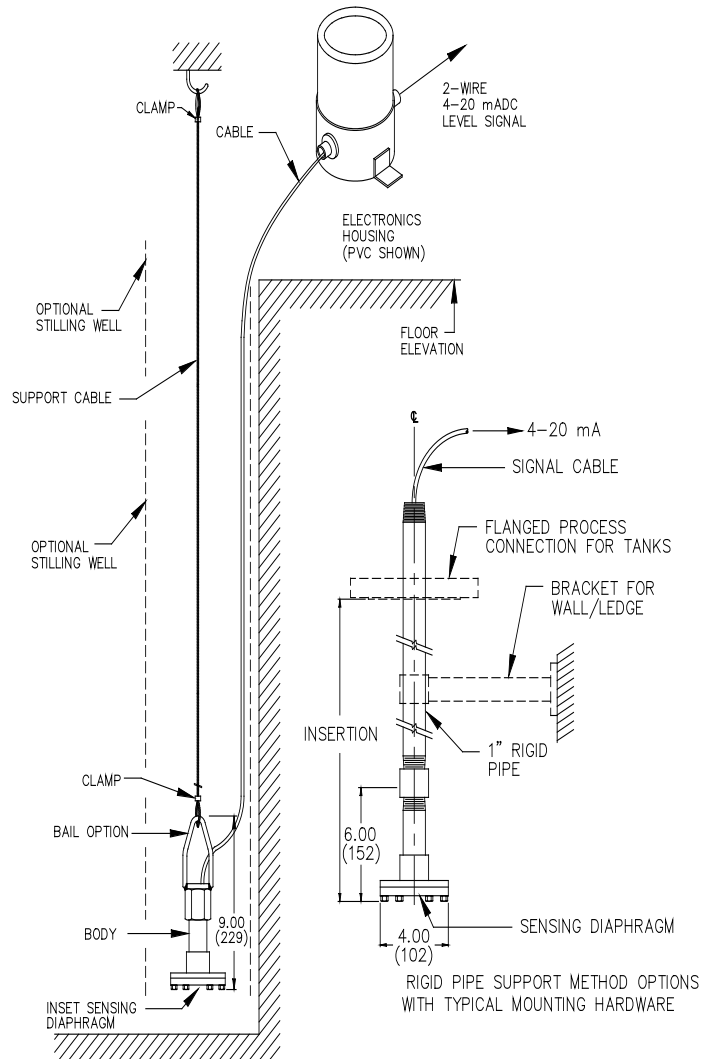
Sewage Lift Stations
Aerobic Digesters
Alum Tanks
Wastewater Sumps

Lime Slurry
Drilling Mud
Catch Tanks
Oil Field Slop Tanks

DESCRIPTION

The Delta Controls Model 566 is a reliable head pressure type level transmitter. The electronics and calibration adjustments are contained inside a remoted housing. The body protects the strain gage sensor. The cable is sealed to the sensor. The strain gage sensor determines the liquid level from the pressure exerted on it by the liquid height above it. Because the diaphragm is completely open to the product being measure, it cannot be plugged and rendered inoperable by liquids with high solids and grease content liquids such as sewage, wastewater, and slurries.

The diaphragm is fabricated from tough rubber and is coupled to the strain gage though a non-toxic glycerin fill. The abrasion resistant face has superior resistance to damage from gravel and other moving solids. Its large 3" active size and its smooth outer surface make it extremely reliable and dependable in harsh services.



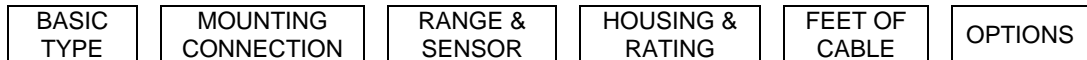
TYPICAL SUMP
INSTALLATION

A vent tube connects atmospheric pressure directly to the sensor and automatically compensates for changes in barometric pressure. An isolation bladder prevents moisture condensation in the vent tube. No maintenance or refilling of the bladder is required.



DELTA CONTROLS
CORPORATION

MODEL NUMBERING SYSTEM



MODEL NO.: 566Y - P - G4 - 4XR - 20V - WMB(2)

M/N	BODY MATERIAL
566Y	316 SS
566V	PVC
566Z	AS REQ'D

M/N	DESCRIPTION
P	1" MNPT FOR PIPE SUPPORT
C	BAIL HANGER FOR CABLE SUPPORT

M/N	* FULL SCALE RANGE (H ₂ O)	
	FEET	METERS
G1	3.5	1.0
G2	7.0	2.0
G3	17.5	5.0
G4	35.0	10.0
G5	70.0	20.0
G6	125.0	40.0

* HIGHER AVAILABLE

M/N	DESCRIPTION
2X*	WEATHER PROOF; 4X; PVC; S.S. TRIM; INTRINSICALLY SAFE, CLASS 1 & 2, DIVISIONS 1 & 2, GROUPS ABCD, EFG
4X	SAME AS 2X, EXCEPT HOSEPROOF
7W*	EXPLOSION PROOF, CLASSES 1 & 2; DIVISIONS 1 & 2; GROUPS BCD, EFG; 4X; ALUMINUM CONSTRUCTION
7T*	SAME AS ABOVE EXCEPT ALL 300 STAINLESS STEEL CONSTRUCTION

^L NOTE: "I" REFERS TO INTEGRALLY MOUNTED ELECTRONICS ON TOP OF A 1" SUPPORTING PIPE. REPLACE "I" OR "R" AS REQUIRED.

M/N	DESCRIPTION (WITH TUBE) 220°F (105°C) SERVICE
* V	PVC OUTER JACKET
* R	TEF OUTER JACKET

^L REPLACE * WITH NUMBER OF FEET REQUIRED

M/N	DESCRIPTION
AA	NONE
328	DIRECT READING LCD DISPLAY
SCJ	VENT TUBE ISOLATION BLADDER
WMB	WALL STANDOFF BRACKET WITH 1" PIPE CLAMP, ALUMINUM AND 304 SS, 2 REQ'D
PSM	BRACKET FOR 2" PIPE STAND OR VERTICAL WALL HOUSING MOUNTING OF REMOTED ELECTRONICS HOUSING
FLA	FLANGED PROCESS CONNECTION ADAPTER FOR USE WITH USER'S 1" SUPPORT PIPE
WLA	EXTENDED WALL / LEDGE SUPPORT BRACKET FOR USE WITH USER'S 1" SUPPORT PIPE
ZZ	OTHER CONFIGURATIONS

MODEL 565 SPECIFICATIONS

Technology: Silicon strain gage

Supply Power: 9 to 35 VDC, 2 wire loop powered

Output Signal: 4-20 mA DC isolated, Intrinsically Safe

Loop Impedance: 550 ohms at 24 VDC, 1100 ohms at 35 VDC

Adjustments: Span from 30% to 100% of sensor range.

Zero to 30% suppression basic; non-interactive

Protective Devices: Transient suppressors & lightning arrestors.

Temperature Range: -20°F to +220°F (-10 to +105°C) (Liquid)

-20°F to +180°F (-10 to 80°C) (Electronics)

30°F to +130°F (1 to 55°C) (Compensated)

Accuracy: ±0.25% F.S. or better

Thermal Error: ±0.015% F.S. /°F maximum

Barometric Effects: None

Over Pressure: 2x rated pressure range; 35 PSI minimum

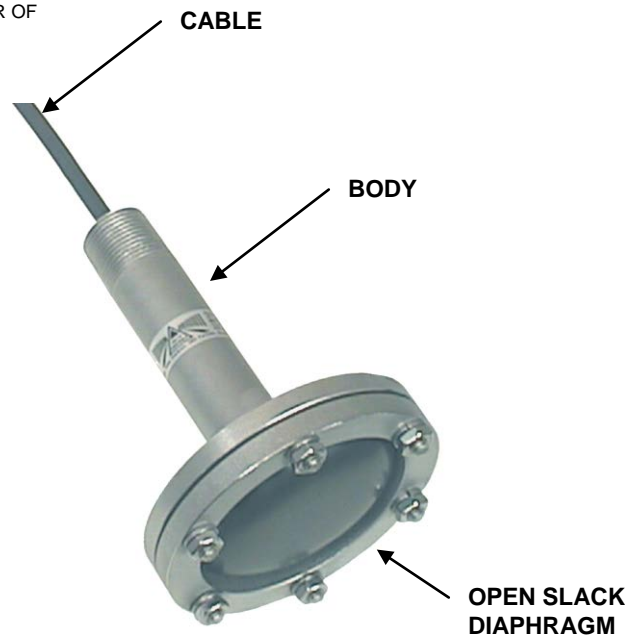
Options Available: some in Remote Enclosure

Large LCD Display in remote housing

DC Power Supply for loop and alarms in housing

Alarm Module (1 or 2); SPDT, 5 amp contacts

Series 350, 1, 2, or 4 unit



DELTA CONTROLS
CORPORATION

Engineered Sensors - For Difficult Services

585 Fortson Street
Shreveport, La. 71107 - USA
Ph: +1(318) 424-8471
Fax: +1(318) 425-2421
E-mail: sales@deltacnt.com
Web: www.deltacnt.com