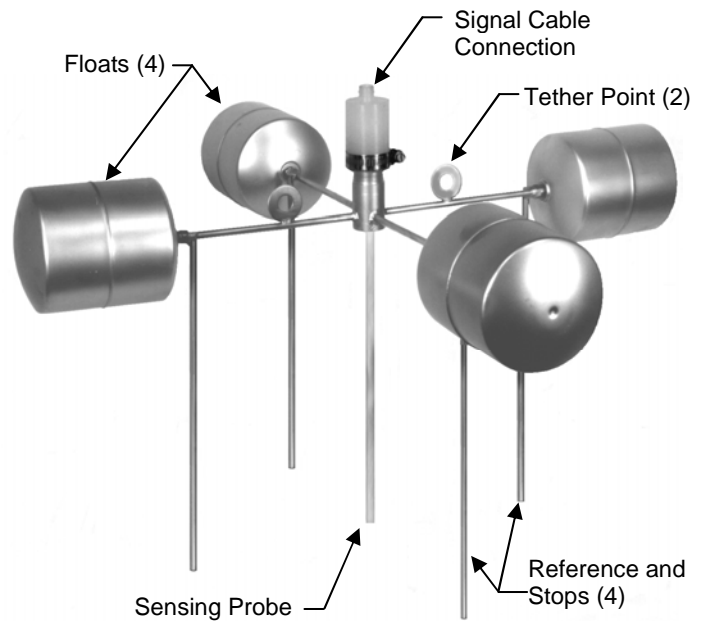


P91 FLOATING PROBE FOR OIL SKIMMER

TS P91

ADVANTAGES

- Measures 2 to 36 inches (50 to 900 mm) of oil floating on water.
- Neither oil nor water level has to be held constant; up to 50 feet (15 M) total elevation change.
- Works on large tank tramp oil collectors.
- Works well on fresh or salt water.
- Entire transmitter can be submerged to 50 feet (15 meters) without harm.
- All 316 S.S. electronic housings are optional for highly corrosive and offshore applications.
- Insensitive to tank pressure from vacuum to 60 PSIG (-1 to 4 bar) is basic.
- Hastelloy "C"® is optional.
- Unaffected by foam, bubbles, and froth.
- Works great with lip type skimmers.



APPLICATION FOR INTERFACE SERVICE

The P91 probe floats on the top surface of oil in a skimmer or separation vessel. A vertical sensing rod, with parallel ground reference rods, is supported by outrigger floats. The sensing rod goes through the floating oil and into the water. The P91 probe/module measures the distance from the top of the oil to the interface between the water and the floating oil. This measurement is then converted into a 4-20 mA DC signal equivalent to the thickness of oil present. Optionally, an on/off differential control signal can be produced to control a drainage pump or skimmer trough.

The P91 is used by petroleum refineries; machinery manufacturing plants, oil field salt water disposal companies and similar industrial operating companies.

SPECIFICATION

Electronics Module: Remoted from sensor

Range: 0-6 to 0-36 inches (150 to 900mm)

Oil Specific Gravity: 0.70 minimum

Tank Pressure: From hard vacuum to 60 PSIG (-1 to 4 BAR) is optional

Attachment: 0.0620 316 S.S. cable

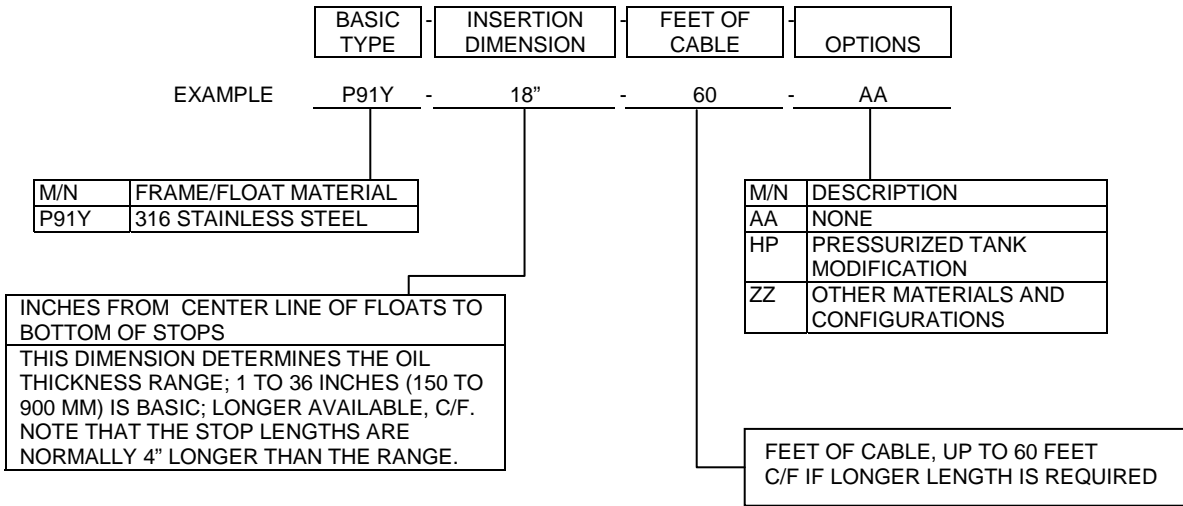
Interconnection: Oil resistant; allows pull up for testing and maintenance. Also acts as a tether in large pond applications. Has a rubber tubular jacket over signal cable; up to 60 feet (4 meters) long

Floats and Frame Support: 316 S. S.

Sensing Rod Jacket and Seals: extruded and welded PTFE

DESIGNED AND BUILT IN THE
USA BY DELTA CONTROLS

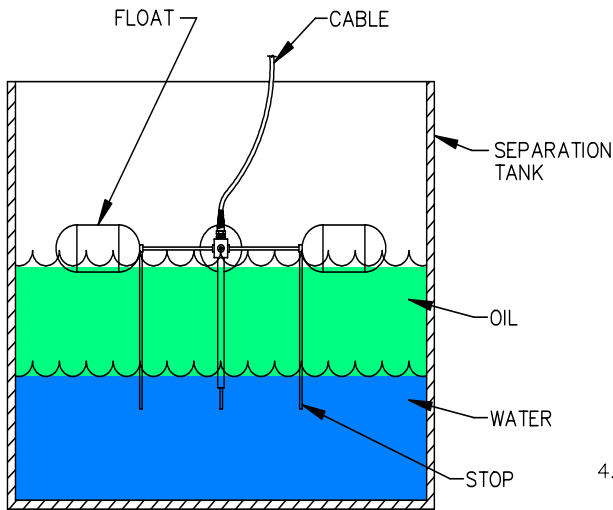
MODEL NUMBERING SYSTEM



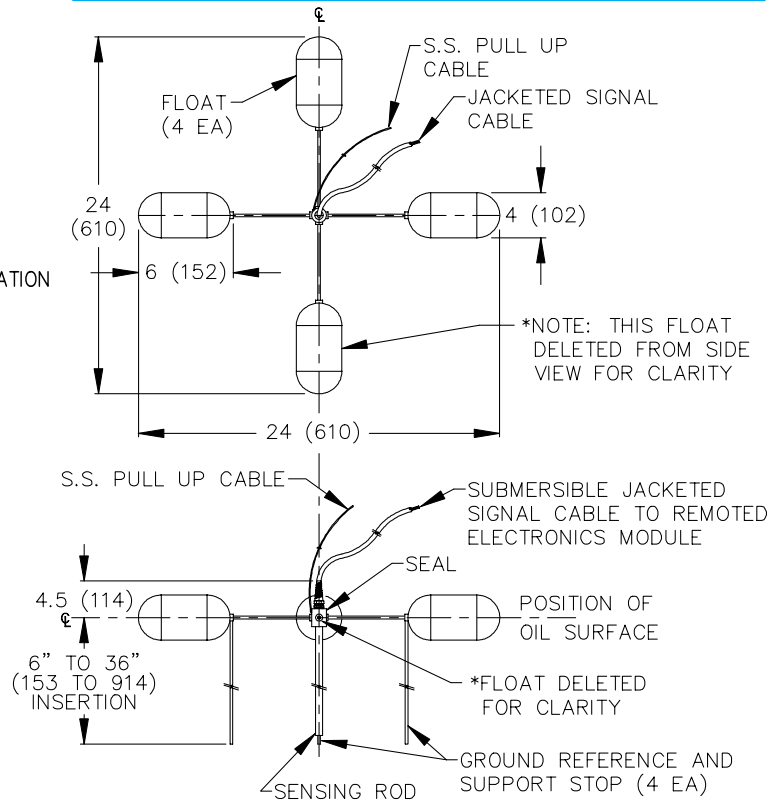
ESTIMATING PROBE PERFORMANCE

The P91 sensing probe has adequate sensing unit change per inch of oil level to perform properly in this specialized application. There is no need to produce a mathematical computation of probe performance on a basic unit limited to the parameters listed under "Specifications". Other configurations, range, etc. will require a workup by Delta's factory engineering group.

TYPICAL INSTALLATION



OUTLINE DIMENSIONS



DELTA

CONTROLS

CORPORATION

Engineered Sensors - For Difficult Services

585 Fortson Street
Shreveport, La. 71107 - USA
Ph: +1(318) 424-8471
Fax: +1(318) 425-2421
E-mail: sales@deltacnt.com
Web: www.deltacnt.com